

Overview of Refugee and Asylum-Seekers Population

(as of 30 September 2023)

1.38 MILLION approx
TOTAL REGISTERED



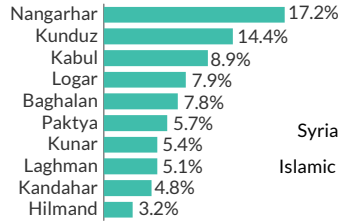
68.7%
OUTSIDE REFUGEE VILLAGES



31.1%
LIVING IN REFUGEE VILLAGES

1.32 MILLION approx
AFGHAN (PoR) CARD HOLDERS

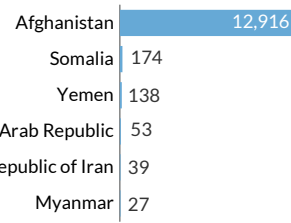
% PLACE OF ORIGIN (TOP 10)



19.6% From other regions

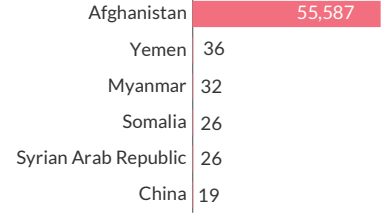
13,439
REGISTERED REFUGEES UNDER UNHCR'S MANDATE

COUNTRY OF ORIGIN (TOP 6)

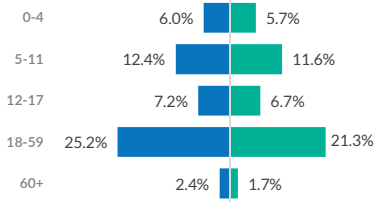
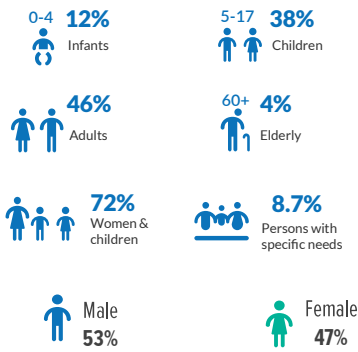


55,791
REGISTERED ASYLUM SEEKERS UNDER UNHCR'S MANDATE

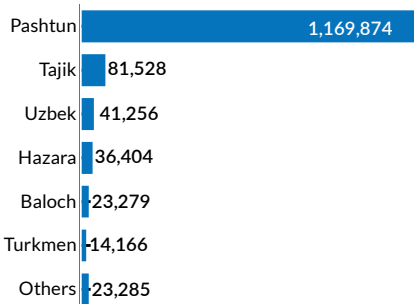
COUNTRY OF ORIGIN (TOP 6)



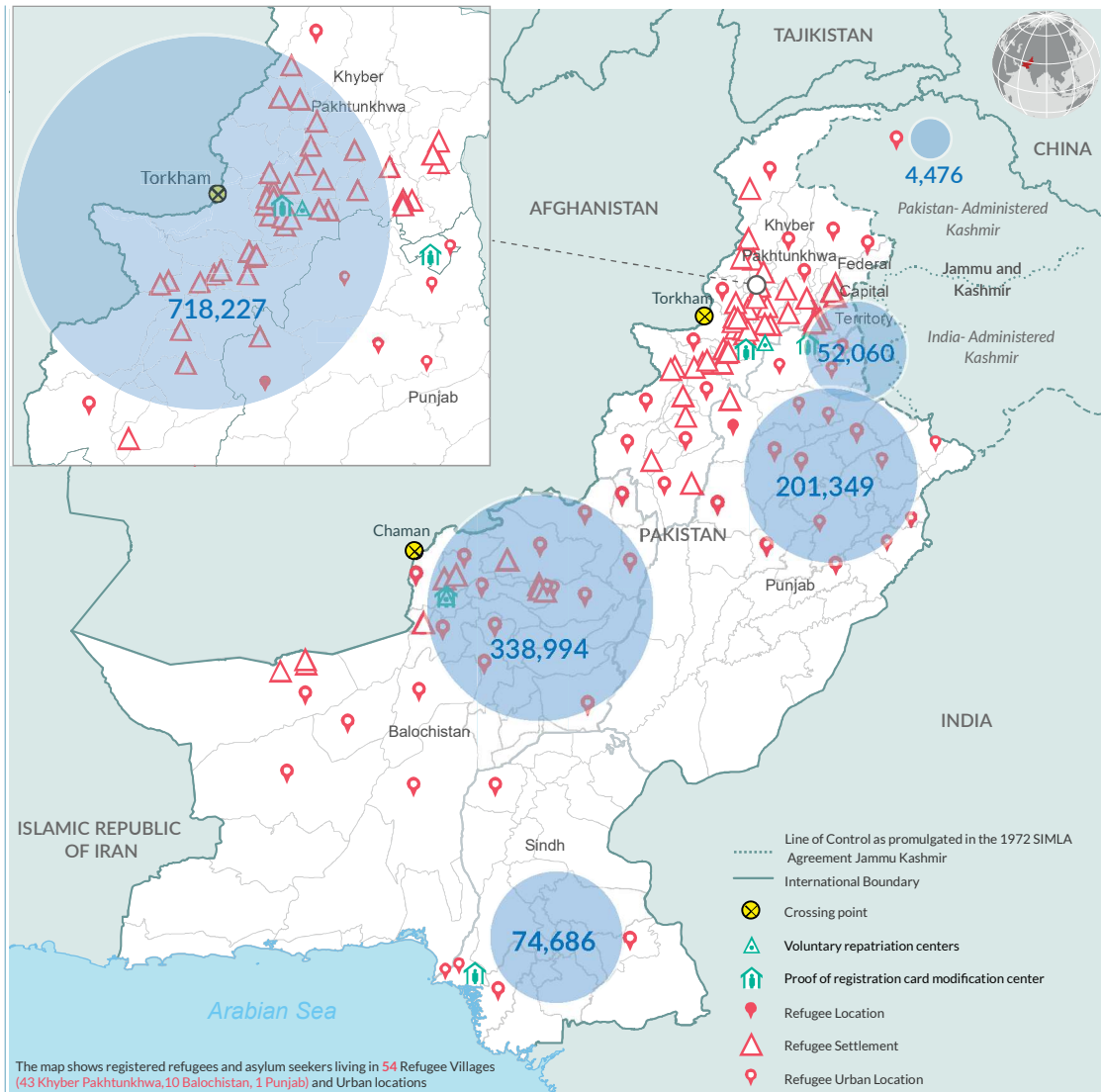
AGE AND GENDER COMPOSITION



BREAKDOWN BY ETHNICITY

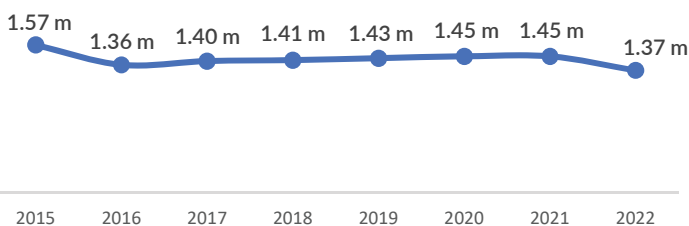


347,510 Households
78,723 (22.5%) Female-Headed

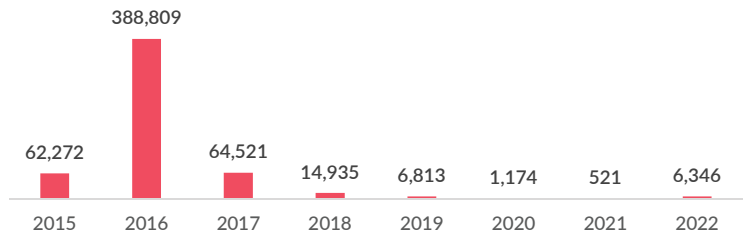


The map shows registered refugees and asylum seekers living in 54 Refugee Villages (43 Khyber Pakhtunkhwa, 10 Balochistan, 1 Punjab) and Urban locations

TRENDS POPULATION TREND SINCE 2015



POPULATION DECREASE TREND SINCE 2015*



The Population Statistics are compiled quarterly using data from Afghan National Registration (ANR) Database and UNHCR Profile Global Registration System (Progres V4). Statistics are updated as of 30 September 2023.

* Decreases result from voluntary repatriation, resettlement and inactivation, including due to deaths

Disclaimer: The boundaries and names shown and the designations used on the map do not imply official endorsement or acceptance by the United Nations. Dotted line represents approximately the Line of Control in Jammu and Kashmir agreed upon by India and Pakistan. The final status of Jammu and Kashmir has not yet been agreed upon by the parties. Creation date: 18 October 2023 Data Sources: Afghan National Registration (ANR) Database, UNHCR.

More information available on UNHCR: data portal, <https://data2.unhcr.org/en/country/pak>, Feedback: Information Management Unit at pakistan@unhcr.org